

For a full copy of the plan visit:

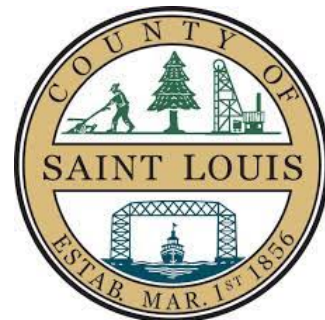
<https://www.nslswcd.org/rrhwvr>

For questions or cost share to implement practices, please contact your local partners:

- Lake County SWCD: 218-834-8370
- Lake County Planning & Zoning: 218-834-8327
- Cook County SWCD: 218-387-3647
- Cook County Planning & Zoning: 218-387-3000
- North St. Louis SWCD: 218-749-2000
- St. Louis County Planning & Zoning: 218-749-7103



Project Partners



Comprehensive Watershed Management Plan Summary

Watershed Vision Statement

From the Voyageurs Highway to Highway 1, the Rainy Headwaters—Vermilion Watershed is the international intersection of pristine water, rich species diversity, awe inspiring wilderness, and a deep rooted culture. We work to sustain these features cherished by all peoples.

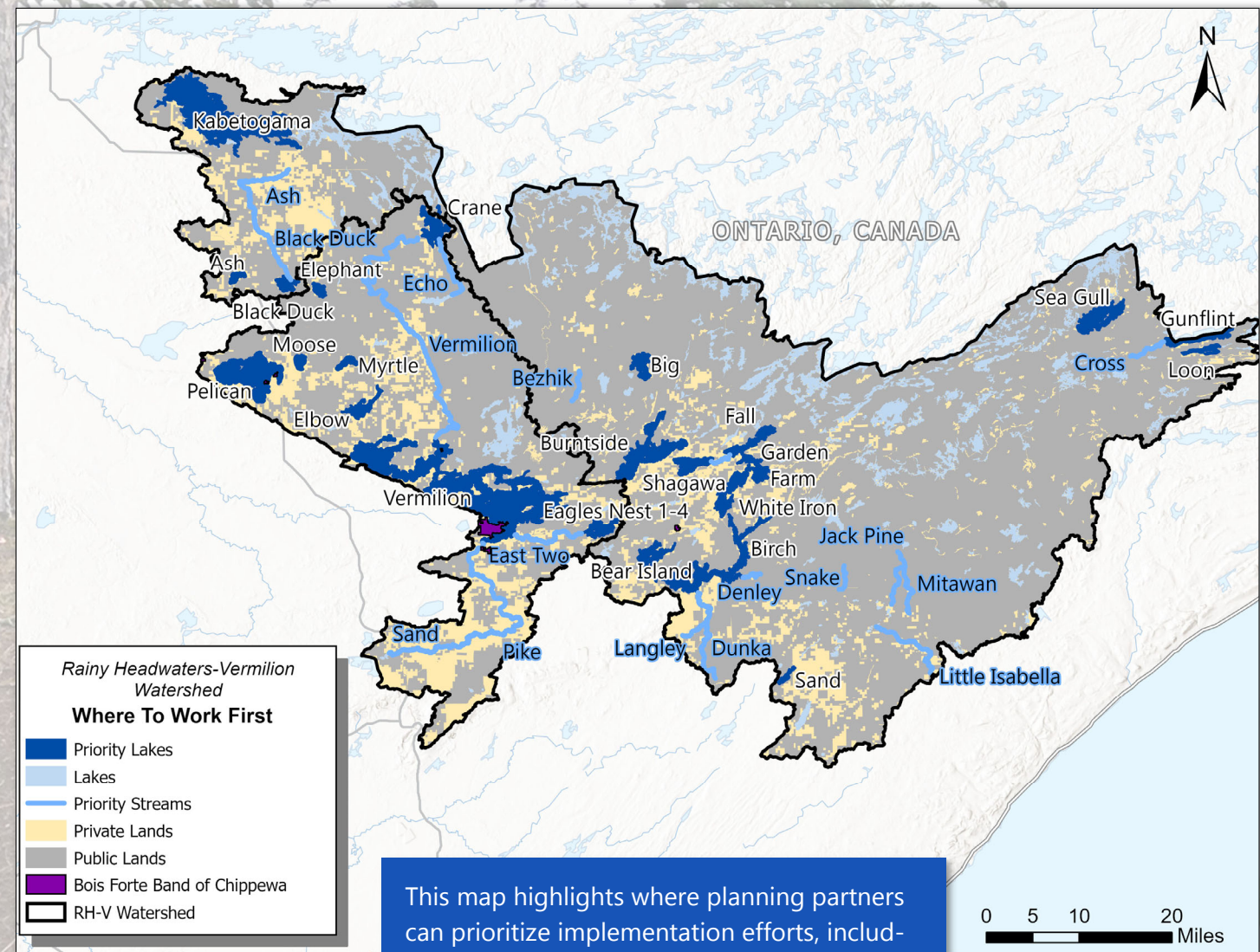
Watershed Highlights

- The Rainy Headwaters – Vermilion watershed is renowned for its abundant clear waters and glacially scoured lakes surrounded by boreal forests.
- It is home to the Boundary Waters Canoe Area Wilderness (BWCAW) and Voyageurs National Park (VNP).
- It covers 3,989 square miles in four counties (Cook, Lake, St. Louis, and Koochiching).
- Approximately 72% of the land is publicly owned, with federal (54%), private (27%), and state (18%) being the largest landholders.
- It is within the larger 1854 Ceded Territory, and the Bois Forte Reservation is within the watershed, on the shore of Lake Vermilion

Plan Highlights

- Implementation of this plan is voluntary, and outreach, cost share, and incentive programs will be used to assist with voluntary implementation on private lands (See map below).
- A Landscape Stewardship Plan was developed in parallel with this watershed plan that helped prioritize forest protection and management for water quality and habitat improvement.
- The Planning partners set 8 goals during the planning process. The goals and their outcomes are highlighted below.

Where to Focus Work



This map highlights where planning partners can prioritize implementation efforts, including private land and priority lakes and streams identified by the planning partners. These lakes and streams were selected based on water quality impairments, trends, and development pressures.

10-Year Plan Goals

<h3>Lake & Lakeshore Management</h3> <ul style="list-style-type: none"> ◇ <u>Goal:</u> 2 miles of lakeshore restored to natural vegetation ◇ <u>Outcome:</u> improved water quality and shoreland habitat 	<h3>Riparian Enhancement</h3> <ul style="list-style-type: none"> ◇ <u>Goal:</u> enhance 1 mile of riparian land and implement 100 acres of agricultural best management practices ◇ <u>Outcome:</u> improved water quality
<h3>Forest Health</h3> <ul style="list-style-type: none"> ◇ <u>Goal:</u> manage 4,200 acres of forested land ◇ <u>Outcome:</u> healthy forests that protect water quality and are resilient to climate variability & invasive species 	<h3>Land Protection</h3> <ul style="list-style-type: none"> ◇ <u>Goal:</u> protect 1,579 acres with Sustainable Forest Incentive Act or conservation easements ◇ <u>Outcome:</u> protected water quality and habitat
<h3>Connectivity Enhancement</h3> <ul style="list-style-type: none"> ◇ <u>Goal:</u> 10 connectivity barriers removed. ◇ <u>Outcome:</u> improved water quality and fish passage 	<h3>Drinking Water Protection</h3> <ul style="list-style-type: none"> ◇ <u>Goal:</u> seal 50 unused wells and replace 50 noncompliant septic systems ◇ <u>Outcome:</u> protected surface and groundwater drinking sources
<h3>Stormwater Management</h3> <ul style="list-style-type: none"> ◇ <u>Goal:</u> 4 stormwater plans and 4 stormwater projects in developed areas ◇ <u>Outcome:</u> improved water quality and resiliency to climate variability 	<h3>Water Retention</h3> <ul style="list-style-type: none"> ◇ <u>Goal:</u> No change in current watershed discharge and build resiliency into projects ◇ <u>Outcome:</u> improved water quality and resiliency to climate variability