

Rainy Headwaters – Vermilion 1W1P

Advisory Committee Meeting, October 11, 2022, Virtual

Participants

Becca Reiss (NSLSWCD), Anita Provinzino (NSLSWCD), Phil Norvitch (NSLSWCD), Ada Tse (St. Louis County- Planning), Amy Mustonen (MPCA), Beth Kleinke (NRCS), Christine McCarthy (Lake County), Erin Loeffler (BWSR), Ilena Hansel (Cook SWCD), Kari Hedin (Lake SWCD), Kim Boland (DNR), Mitch Travis (Cook County), Sam Martin (DNR), Tara Solem (Lake SWCD), Tyler Kasper (1854 Treaty Authority), Julie Marinucci (St. Louis County-Lands & Minerals), Moriya Rufer (HEI).

Meeting Purpose

The purpose of this first Advisory Committee meeting was mainly to get the group acquainted with one another, share existing priorities from state agencies and other local organizations, and brainstorm watershed issues.

Plan Timeline

This graphic is a simplified version of the overall timeline. This timeline is a general guide, and the process can be adapted to fit as we go. We are currently at the **Identify & Prioritize Issues** stage.

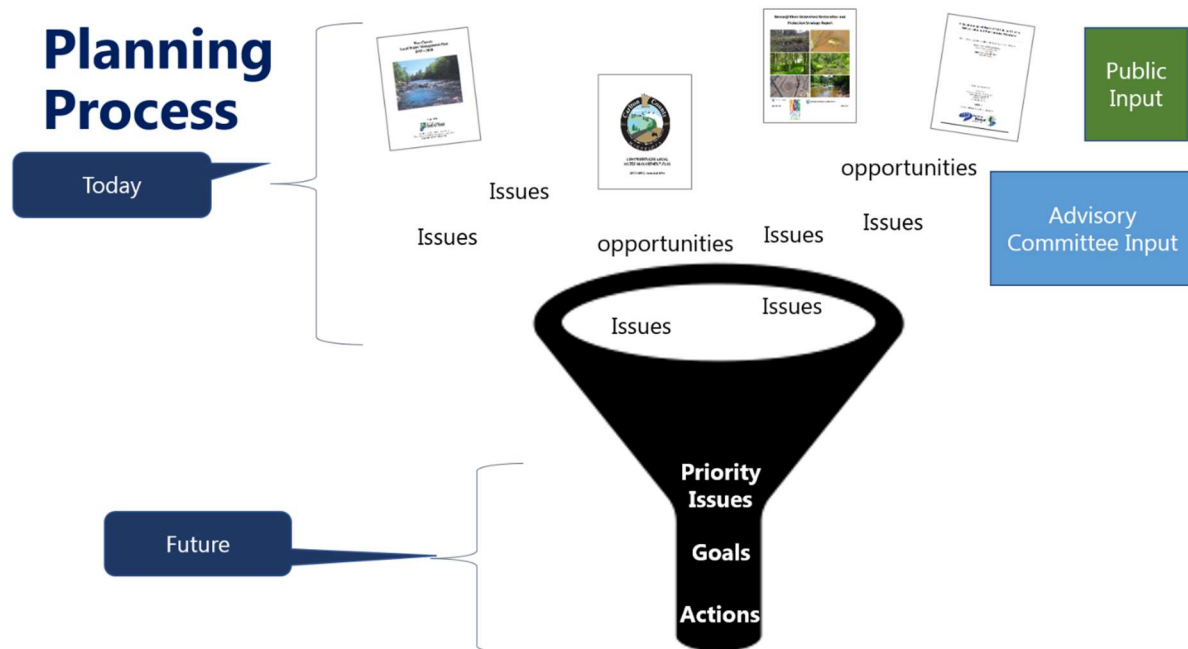


Attendee priorities

Each attendee summarized the priorities in their letter submitted during the 60 Day Notification to Plan. Individual response letters can be found online at: <https://www.nslswcd.org/rrhwvr>.

Issues Brainstorm

The planning process begins with gathering issues from existing water plans and studies in the watershed and pairing that information with issues gathered at meetings such as the public input and Advisory Committee input.



Participants brainstormed issues related to Forests, Lakes, Streams, Wetlands, Agriculture, Stormwater, and Groundwater using Google Jamboard. The full results are attached at the end of this report.

Next Steps

The Advisory Committee will meet monthly for approximately one year. Meeting participants took a poll and determined the regular meeting date to be the last Monday of each month in the afternoon. At the beginning of each new planning topic, the meeting will be held in-person. There will only be approximately three in-person meetings during the planning process.

Upcoming meetings are:

 **November 28:** In-person, Ely area, 12:30 – 3:30pm

 **January 30:** Virtual, 1:00 – 3:00pm

 **February 27:** Virtual, 1:00 – 3:00pm

Issues Brainstorm, Advisory Committee, October 11, 2022

Forests

Diversity for climate change

Diversity and long lived conifer

Healthy Forest Management

Fire risk

Maintain and promote diverse mature forests

Woody invasives

Heath decline

understory planting in thick forests for succession

Aligning forestry priorities of this plan with DNR forestry harvest on school trust lands

Pests - Emerald Ash Borer, Gypsy Moth, Spruce Budworm Damage

Preparing for loss of ash trees due to EAB

Alignment of ALL Trust Lands (School/TF/University)

Streams

Buffers both streams and lakes

connectivity

restoration of channelized streams

Properly sized road crossing structures (culverts, bridges, etc) for climate resiliency

storm capacity

Protection of headwaters

Connectivity to floodplains

Giving correct guidance for riparian buffers - what plants, where, how much?

Passing of people- I really like that (crossing streams)

Blackduck River restoration work identified in TMDL

Climate refuge for coldwater fish

stream flood plain connectivity

Lakes

Shoreland management regulations, update codes where needed

water quality and quantity

septic systems

Algae blooms

Lakeshore over-development, clearing shorelines of native plants and trees

Contaminants such as mercury and PFOS

Sulfate

Equitable access for recreation and other use

lake drinking water

Phosphorus sensitive lake protection

Protecting coldwater lakes for trout and tulabee

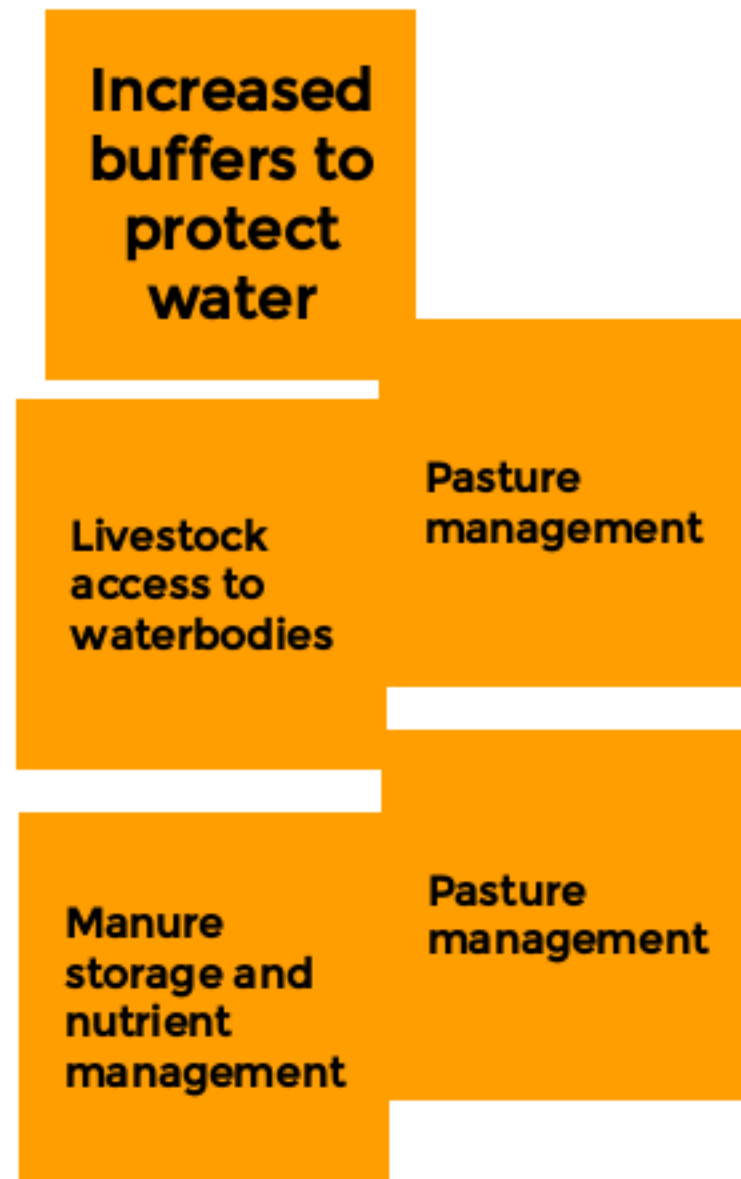
Lack of native planting for shoreline buffers

shoreline and riparian set backs for development due to changing weather, water levels, ice, etc.

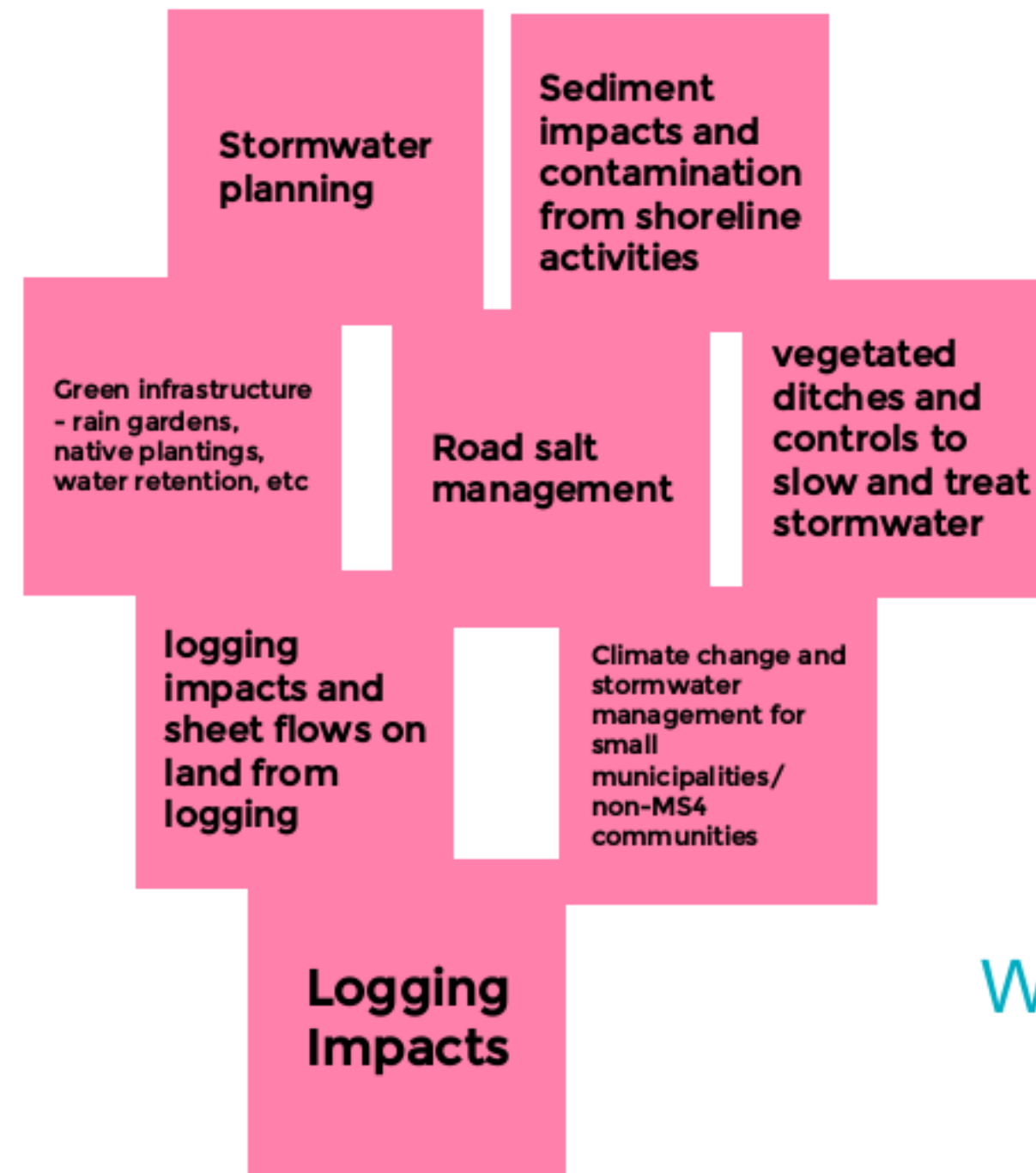
Lakes identified as sensitive to nutrients and as high benefit to cost return

Issues Brainstorm, Advisory Committee, October 11, 2022

Agricultural Practices



Stormwater



Groundwater



Wetlands



Additional Items:

